



ONE TWO ONE

art and architecture

<http://www.onetwoone.org.uk>

TEMPORARY CARPET/IDEAL HOMES PROJECT.OTO



ONE TWO ONE booklet contents:



who we are

Elise Liversedge

Mary Hooper

these pages show artwork and relevant histories. **A sort of CV**

A brief history of ONE TWO ONE.

what we do

consultation

organisation/management.

mixed media designwork



what it looks like

images.



all images in this booklet are by ONE TWO ONE

SOUTHWATER

[illegible]

AFTER

ING ORDINARY PEOPLE DON'T KNOW THEIR RIGHTS. SHOW LOCAL
NIGHT CLUB, STAND AS A PERMANENT MEMORIAL. SOMETHING SOLID
TO OTHERS HOUSES. VERY DIFFERENT BACKGROUNDS. 57 NATIONAL
TE TO MY MEMBER OF PARLIAMENT. IT WILL BLOCK OUT THE SUN, IT
WINDOWS FACE THE SEA. MARKED INCREASE OF CARS. HOUSES
WHAT'S LEFT. WATCHING THINGS CHANGE. GIANT OAKS, BEECH AND
AREA. RESIDENTS DO KNOW ONE ANOTHER. JUST STOP AND TALK
AN. LOCAL. ALL DIFFERENT PEOPLE COME HERE. INTERESTING TO KNOW
UNITY. SOCIAL NETWORKS. PEOPLE WHO ARE LONELY. MEETING POINT
CY, GOOD PLACE. I'M IN THE KURDISH FOOTBALL TEAM. GIVE THE PLACE
THAT MEANS HOME. I SEE PEOPLE WALKING TOGETHER AND TALKING
HELLO TO PEOPLE AND TALK. OUTDOOR OBJECTS WITH HISTORY AND
LIVER PAPERS UP AND DOWN SOUTH WATER ROAD. THE IRISH NAVY
G PEOPLE AWARENESS.  UNING PEOPLE INVOLVED. PEOPLE COME
TECTIVE ABOUT IT. I LIKE THIS AREA. VERY DIFFERENT PEOPLE. WIDE
USE HAS 8 FLATS IN IT. FLAT ABOVE. THERES A COUPLE WITH A TWO Y
WE DID SOME RESEARCH. ITS A 100 YEARS OLD. ALL THIS AREA WAS
VELOPMENT ON. THE VALLEY FLOOR. LUXURY APARTMENTS. FIGHTING
POPULATION. OF A DESIRABLE LOCATION. PEOPLE WANT TO PRO
IN FLATS.  TATION TO ENHANCE THE AREA. I AM FROM IRAQ. K
HRI-ANKAN. ATTRACTING PEOPLE. WORKING WITH THE LOCAL COMM
ELTING POT. COMMUNITY FOCAL POINT. I CAME THROUGH AN OPEN
information exchange : up the road and round the corner

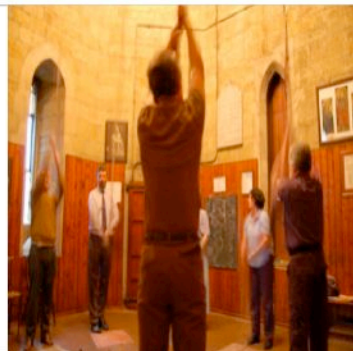
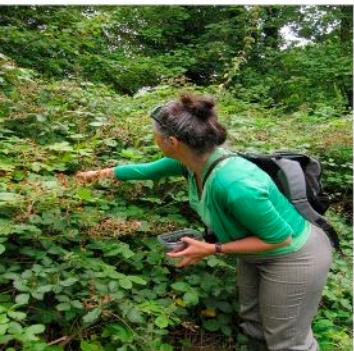
A close-up photograph of a white banner with the word "SOUTH" printed in large, bold, black capital letters. The banner is slightly wrinkled and is positioned above a green lawn.



who we are

Elise Liversedge
Mary Hooper
artwork and relevant histories.
A sort of CV

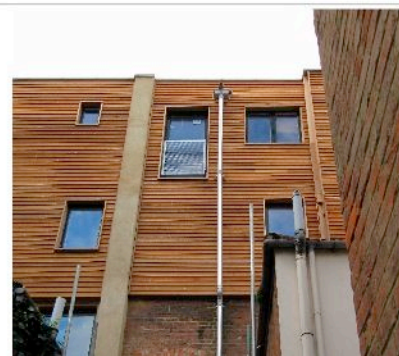
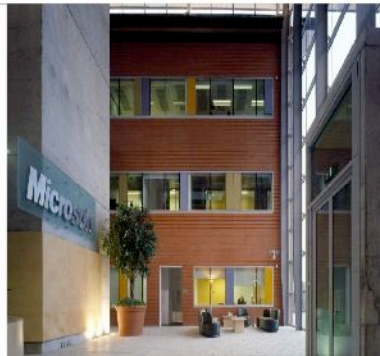
A brief history of ONE TWO ONE.

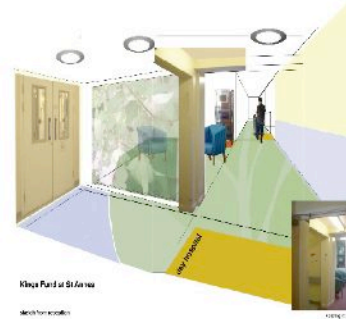


Elise Liversedge

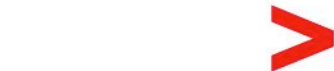
quick history:

Elise Liversedge is an Artist and Architectural Designer practising within the Built Environment with an interest in simple ways to transform and heighten the experience of the space and the materiality of the world around us, and the enjoyment that can be relayed through exploring the small and the large, the tangible and the intangible. From working in a large Architectural practice to setting up and running a small multidisciplinary design company with her brother Jamie Liversedge, Elise has developed a flexible working practise as an independent designer or as part of a team, preferring the collaborative process of working on a project, where ideas can be discussed and an inclusive critical debate can deliver the best possible result.





Kings Fund at St Annes
reception area



Project case study : St Annes, Hastings

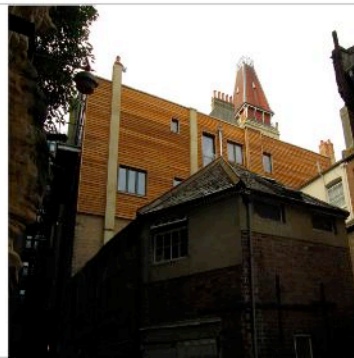
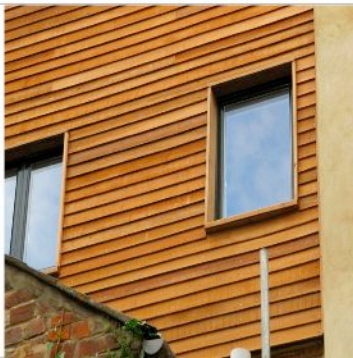
Elise was employed by the Sussex Partnerships NHS Trust to be the St Annes Centre 'kings fund' Project Designer from design through to construction.

The scope of the project was to deliver an inclusive period of creative consultation engaging all users of the Centre which is an Elderly Mental Health Unit with both Inpatients and Outpatients, and to develop the collected ideas into a scheme.

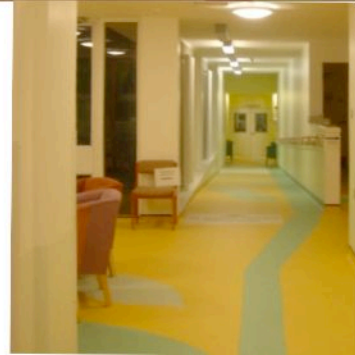
The main elements of the design were all decided through the consultation process.

Through this project the Reception Area underwent a complete redesign and an underused cleaners cupboard transformed into a seemingly spacious waiting area.

The resultant scheme was then detailed and after a tendering process and a period of Value Engineering completed on site November 2007.







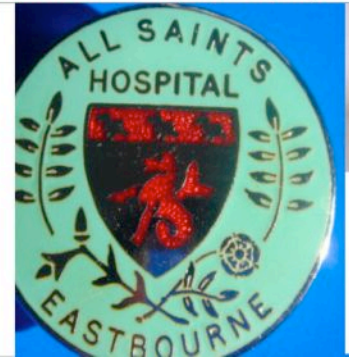
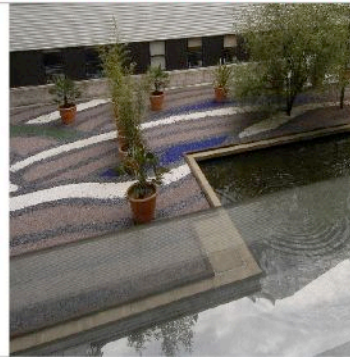
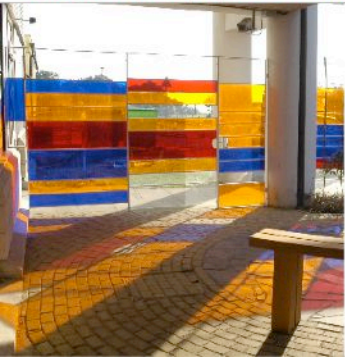
quick history:

Mary Hooper was the Curator and founder of the pioneering Arts in Healthcare Programme for East Sussex Hospitals NHS Trust, from 1989 -2007, achieving a national reputation for excellence and innovation. During this time Mary Hooper commissioned a wide range of site-specific Artworks as part of the construction for St. Anne's Centre, Conquest Hospital, and Woodlands Mental Health Acute Unit, working closely with the Project Teams and Users as part of the commissioning process.

She also established an Arts Team to develop Participatory Arts projects and the Exhibitions Programme for the Conquest and Eastbourne Hospitals, and has worked as a consultant for Arts in Healthcare at a national level. Mary left Arts in Healthcare in March 2007 and set to work as a freelance artist and public Arts consultant.

Mary Hooper

images of past projects . relatives garden, Conquest Hospital. internal artworks commissioner East Sussex NHS, courtyard Conquest Hospital, All S



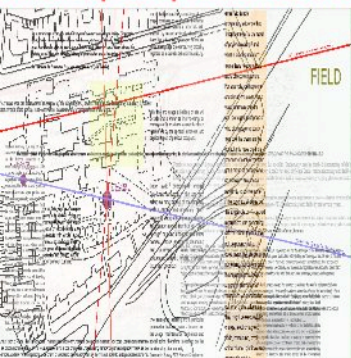
Project case study: Heritage in Hospital UCLH 'touch and wellbeing'

Two year residency shadowing and interpreting research by UCL looking at the possible benefits to wellbeing of using museum handling collections in activities with hospital patients.

The interpretation of the research for the public, and medical, museum and arts professionals will be shown in two exhibitions at UCLH from November 2010 – April 2011, and as a virtual interactive exhibition on a website commissioned as part of the residency.



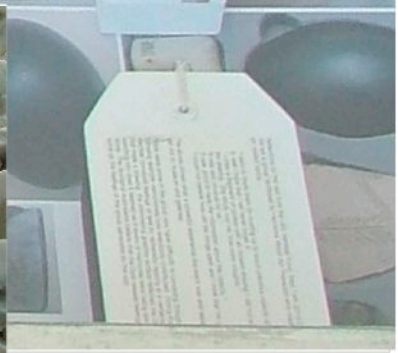
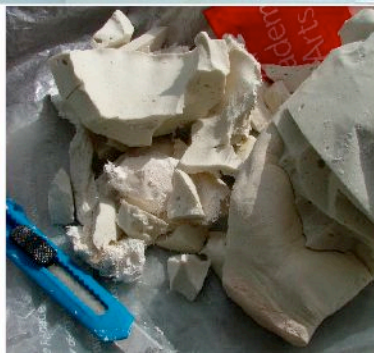
Saints Hospital 'Spirit of Place' arts project lead artist, 'All the Apples' lead artist. 'On the verge' lead artist, 'shaking the tail feather' lead artist.



'touch and wellbeing' pavement gallery show UCLH London 2010-11



part of the 'touch and wellbeing' project



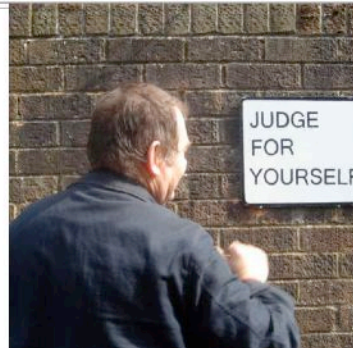


quick history:

ONE TWO ONE art and architecture was founded in 2004 to create a network of Artists and Designers with the skills and creative vision to undertake consultancy and commissions for Public Art locally and nationally. The Directors Mary Hooper and Elise Liversedge have a track record of excellence in the fields of Healthcare and Urban Regeneration with 20 years experience of delivering projects using their collective skills and experience as creative practitioners and consultants in the development of community sustainability working with local communities and professionals in the Arts, Healthcare and Local Government.

The name ONE TWO ONE came about through the door number of the first studios : 121 Farley Bank Hastings, a rent free studio in a up for demolition block of flats donated by a Housing Association in exchange for community involvement.

ONE TWO ONE



Commissions

2010- 2011 'touch and wellbeing'

Website design and construction for the 'Heritage in Hospital' handling objects project for University College Hospitals London.

2009- 2011 'journey from one place to another' Station Plaza Health Centre

Lead artists and commissioners for the new Health Centre in Hastings for Hastings and Rother NHS.

2009- 2011- "up the road and round the corner".

Lead artists for a series of four large ceramic panels depicting the history and stories of the area researched and compiled with the help of local Historians, the Library, Museum, and community groups. The panels were made in Collaboration with Brighton University 3d Design Department.
(final installation of panels going through a Local Planning Application jan 2011)

2009- 2010 'Ore Valley Cultural Strategy'

Lead artists and consultants employed to develop a framework for a cultural strategy and a sustainable arts programme in the Ore Valley for Hastings Borough Council.



Residencies

2009- 2011 'journey from one place to another' Station Plaza Health Centre

2007- 2009- "up the road and round the corner".

Artists in Residence working with the Southwater Residents Association, a collaborative arts project with local residents, community groups and schools in St. Leonard's to build better community networks and develop a sense of place and identity through the enhancement of the public spaces and streets. We have shown in this project how seemingly simple acts can transform how people see and feel.

For example how the commissioning of a special bell peal, which can be heard on our website, for a dis-enfranchised network of streets can immediately give the local resident a sense of identity. Their common interest is to enhance their own 'public realm' and by doing this create a greater sense of identity and belonging.

2004 -2007 Ore Valley Arts.

Artists in Residence in de-commissioned flats before demolition. Established ONE TWO ONE with a grant from the Arts Council. Become a special interest group of the Ore Valley Forum (OVF) in 2005. Currently working with OVF and Sea Space (the Millennium Communities development agency) to develop a sustainable Arts Programme for the Ore Valley Green Space.



'Surgery Poetry Sites' station plaza health centre 2010 installation







1976/78 The Council and local organizations struggle to regenerate the Town Centre, which is degenerating and falling to without shoppers in Hastings. The Council feels that a Shopping Centre is the solution.

1982 The Council invites major developers to submit detailed schemes to develop the Central Cricket Ground, near Priory Meadow, into a shopping Centre. In the 1980s major developer planning a large Regional Centre, called the Priory Meadow Shopping Centre.

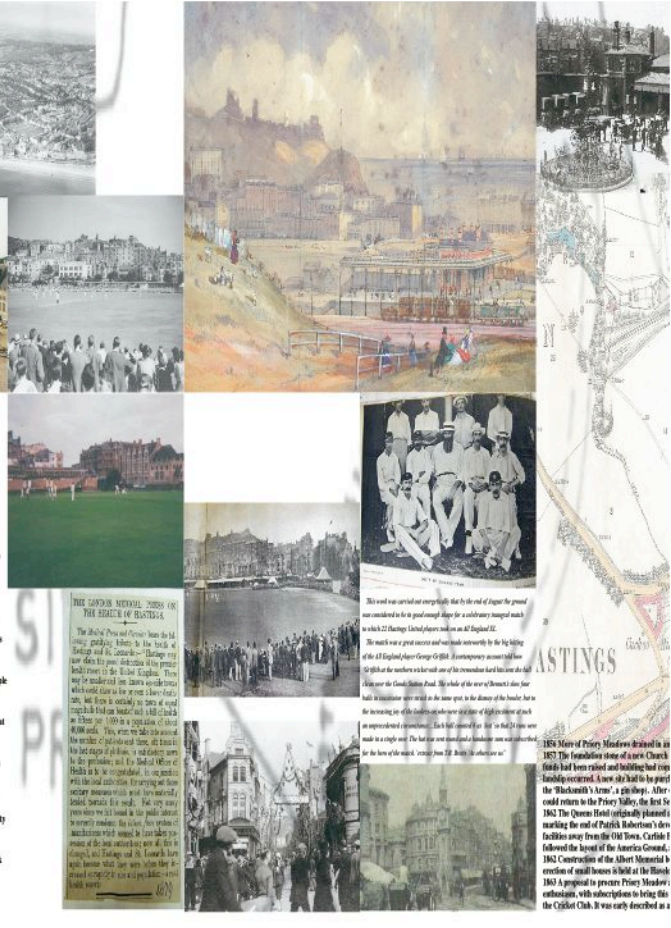
1985 Another developer signs contracts with major multiple retailers, and the former Central Cricket Ground site is officially handed over to them.

1987 Priory Meadow Shopping Centre opens, completed at a cost of £35 million. Built on the site of the original harbour, it is supported on many hundreds of piles. It comprises a shopping mall and a new open space, Queens Square, surrounded by retailers.

2008-2009 The major re-development of Hastings Town Centre continues, with new office and residential accommodation and further pedestrianisation, a University Centre in Horsehold Road and a new Railway Station.

2010-2011 The Development of the new Sussex Coast College and Health Centre on the former building car park and goods yard, once part of the lands of the medieval Priory of the Holy Trinity.

Chronology Dennis Collins 2010



Station Plaza GOODS SHED

A JOURNEY through THE DEVELOPMENT OF PRIOY MEADOW AND



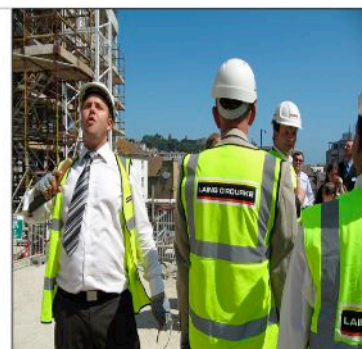
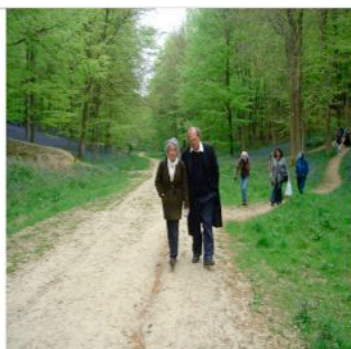
'up the road and round the corner' Biography panel 3 of 4. 2010-11





what we do

work we have undertaken as
ONE TWO ONE.
consultation
organisation/management.
designwork



'ideal homes' outside workshop 09

MOVE FOR SOME PEACE + QUIET!!!

WANT to MOVE fed up

HOME IS MY SANCTUARY/WOMB/IK

happy, Safe, loved, Needs missing! A work in progress.

SOO

YAS FISH

FRIED ONIONS & GARLIC

Clean nice Soft Welcoming Happy

VAS S. C. V. P.

Security

Warm, cosy, flat fur! rooted & insulated. Protect

Warm and Welcoming

WELCOMING - WARM

THAT IS TO SMALL (Fe)

Safe in my house. I would rather have a pink front door instead

it's soft to the day

I ❤️ 09
ore



Consultation/Planning

Through the commissioned projects and residences the consultancy and planning involved the researching of a series of places and people and working with a variety of project teams and stakeholders, from primary school to seniors forums. and just getting to know : 'who knows what' and the right person to ring to : 'get this, that and the other'

From active workshops with scaled models, to discussions about wellbeing to recording interviews filming vox pops, making cream teas. jam making, social dances, local history lectures.

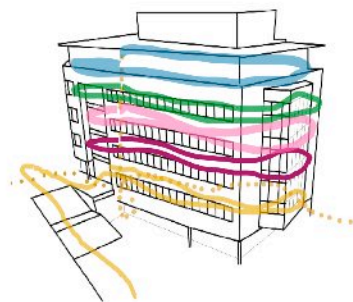
The planning of a project is concerned with creating strategies, working schedules and when commissioning other artists developing a design brief; selection of artists and designers; liaison and project approval and maintenance.

The delivery of a project is managed through regular client/project team conversations and meetings. Project documents, reports and live website updates to allow for inclusivity throughout the project.

Artwork

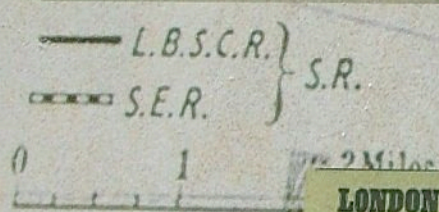
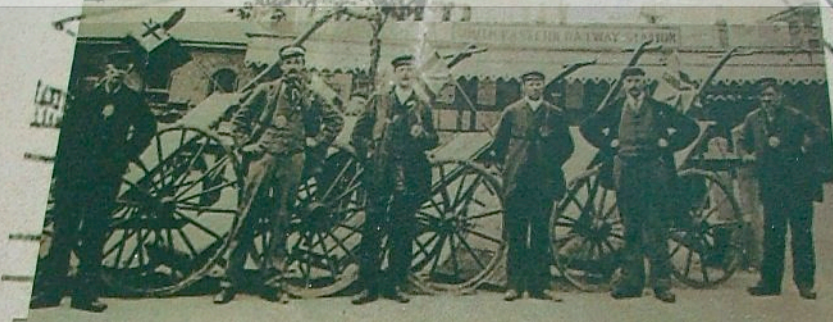
The tangible artwork created has all been developed through the work and ideas generated from the consultation process. From vinyl film on glass. bespoke wayfinding panels, ceramic tiled panels, flooring both internal and external, sound and light pieces. Biographical and 'sense of place' is an important element in all our work.

When needed we work through ideas using scaled models and sketches to work through an idea. Once an idea has been arrived at rough sketches would be reviewed with the client or project team and once agreed we would refine the concept and arrange to present through physical and virtual methods.



'up the road and round the corner' Biography files 20.0

"Historically it's the 1850s onwards that the development of Southover really began. It's been a long time since it had to be really because the station got here first and they were left with the land that was behind the station, bounded by the Tarring Road, which is Ewhurst Road.
Brian Lawes local historian



LONDON & BRIGHTON RAILWAY.
OPENING OF THE RAILWAY
HASTINGS
AND
ST. LEONARDS
TO LEWES,
BRIGHTON, AND LONDON.

SATURDAY, JUNE 27TH INST.,
 The following Trains will start from the Temporary Station,
BULVERHYTHE:-
 At 7 a.m., arriving in Brighton at 8.30, in time for the Express Train for London.
 9.45 a.m. " Brighton at 11.30. London at 1.30.

St Leonards
 (Opened 1887)
 LEONARDS
 BRIDGES



For upto date project information
please go to our website or Blog

www.onetwoone.org.uk
www.noticeboard121.org.uk



what it looks like

images- 1-3. vinyl applied to glazing floor 2 and
3 and wayfinding panels B-4 station plaza health
centre, Hastings 2010















